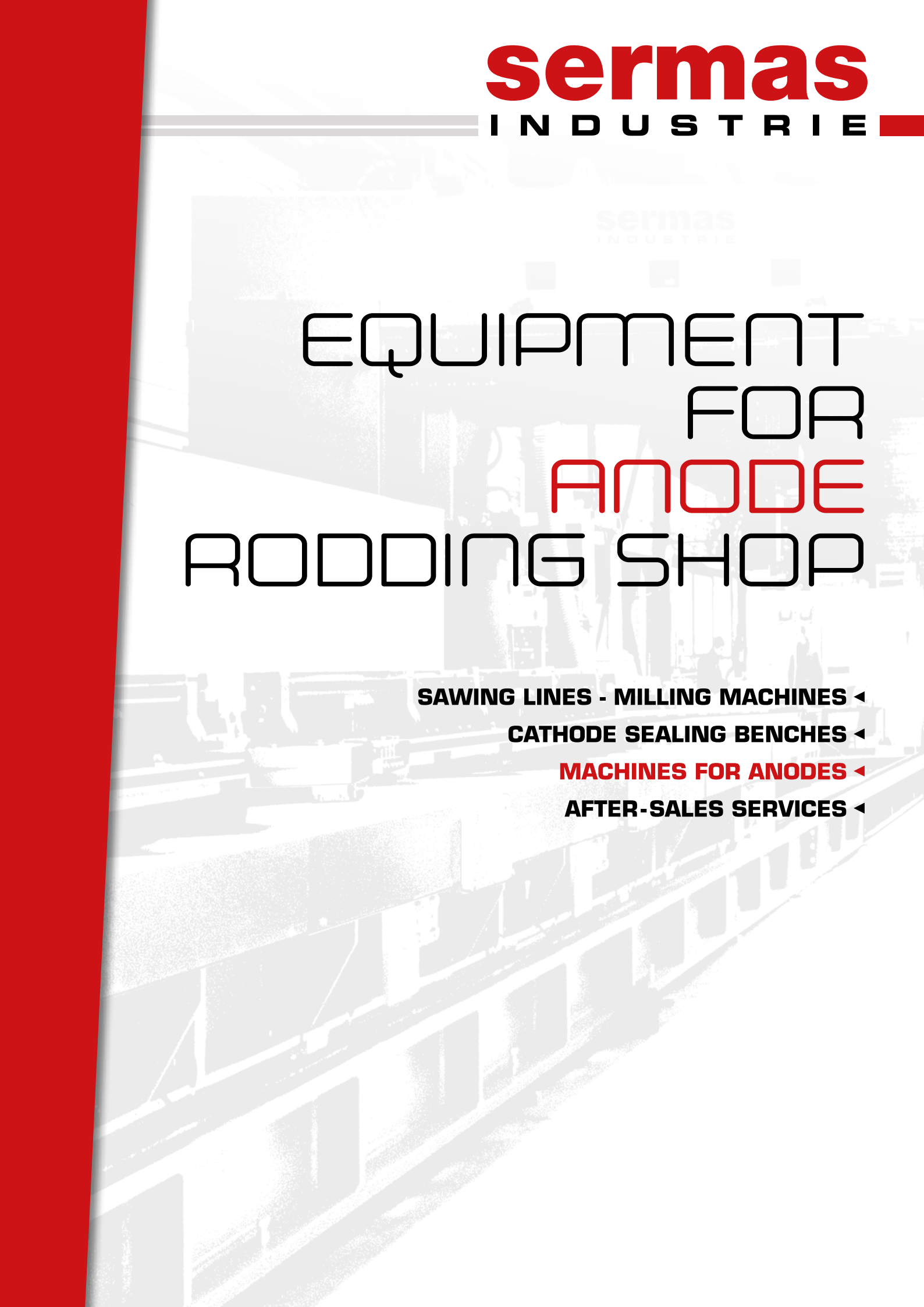




**sermas**  
INDUSTRIE



EQUIPMENT  
FOR  
**ANODE**  
RODDING SHOP

**SAWING LINES - MILLING MACHINES ◀**

**CATHODE SEALING BENCHES ◀**

**MACHINES FOR ANODES ◀**

**AFTER-SALES SERVICES ◀**

# MACHINES FOR ANODES

## HOOKING - UNHOOKING STATION



## BUTT BREAKING PRESS



## THIMBLE PRESS



## ANODE MATTING & CASTING STATION



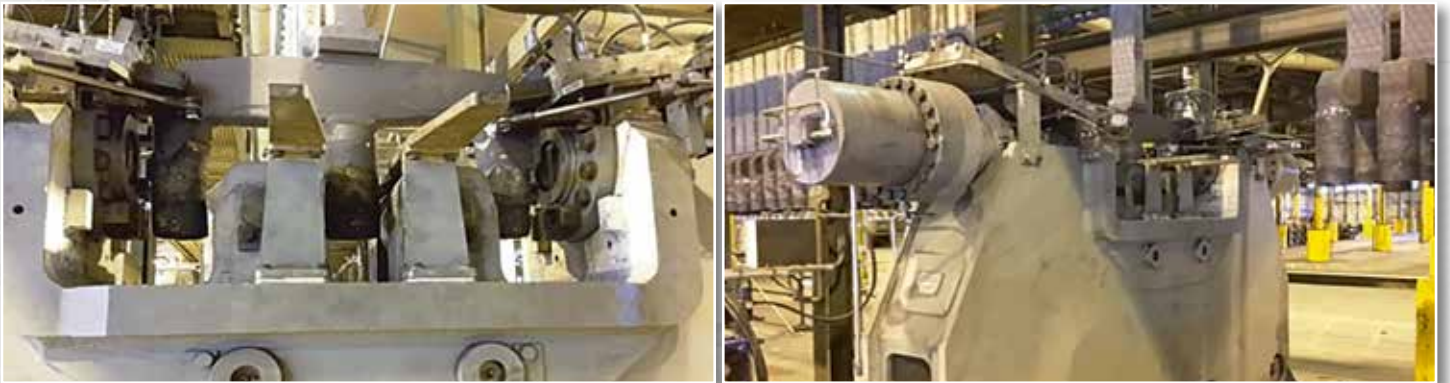
**ANODE CASTING MACHINE**



**ANODE STEM BRUSHING MACHINE**



**STUB STRAIGHTENING MACHINE**



**ANODE CLEANING MACHINE**



**ANODE HANDLING EQUIPMENTS**



**ANODE BAKING FLUE WALL BRUSHING MACHINE**



## OTHER SECTORS OF ACTIVITIES

### SAWING LINES - MILLING MACHINES



#### Large scale sawing processes

- ▶ Complete sawing lines
- ▶ Billet saws
- ▶ Slab saws
- ▶ Plate saws
- ▶ T-bar saws

#### Cast plate producing equipment

- ▶ Block saws
- ▶ Slicing saws
- ▶ Milling machines
- ▶ Plate tilter

### CATHODE SEALING BENCHES



#### Complete equipment including:

- ▶ Furnace
- ▶ Shot blasting machine
- ▶ Bar manipulator
- ▶ Cathode sealing station...

### AFTER-SALES SERVICES



- ▶ Spare parts
- ▶ On-site assessment
- ▶ Upgrade of equipment
- ▶ Consumables

## FROM CONCEPT TO REALITY

#### Methodology:

- ▶ Engineering
- ▶ Manufacture
- ▶ Tests in our workshop
- ▶ On-site commissioning
- ▶ Training
- ▶ After-sales services



**SERMAS INDUSTRIE** - 343, chemin du Stade - 38210 SAINT-QUENTIN-SUR-ISERE - FRANCE  
Tel.: +33 (0)4 76 07 42 42 - Fax: +33 (0)4 76 93 67 76 - E-mail: sermas@sermas.com

[www.sermas.com](http://www.sermas.com)

ISO 9001-2008  
certified

